

Figure 1.1.
stage

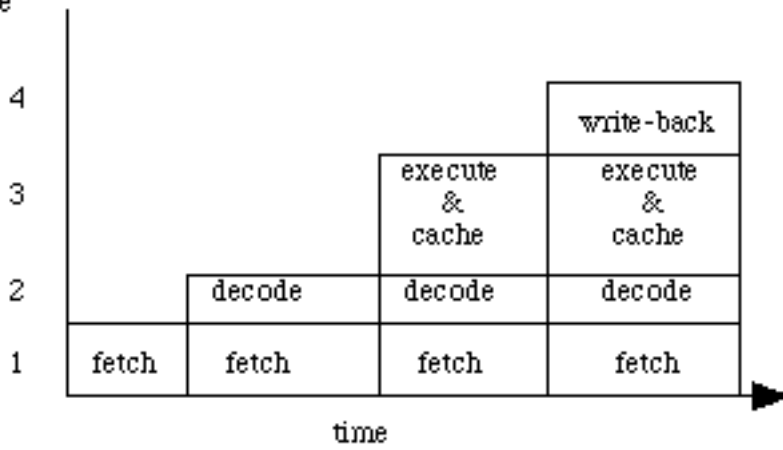


Figure 1.2.

Java Programs Java Classes		
Java Virtual Machine		Kona
Adapter	Java Operating System	
Operating System	Java Chip Hardware	picoJava
Hardware		

Figure 1.3.

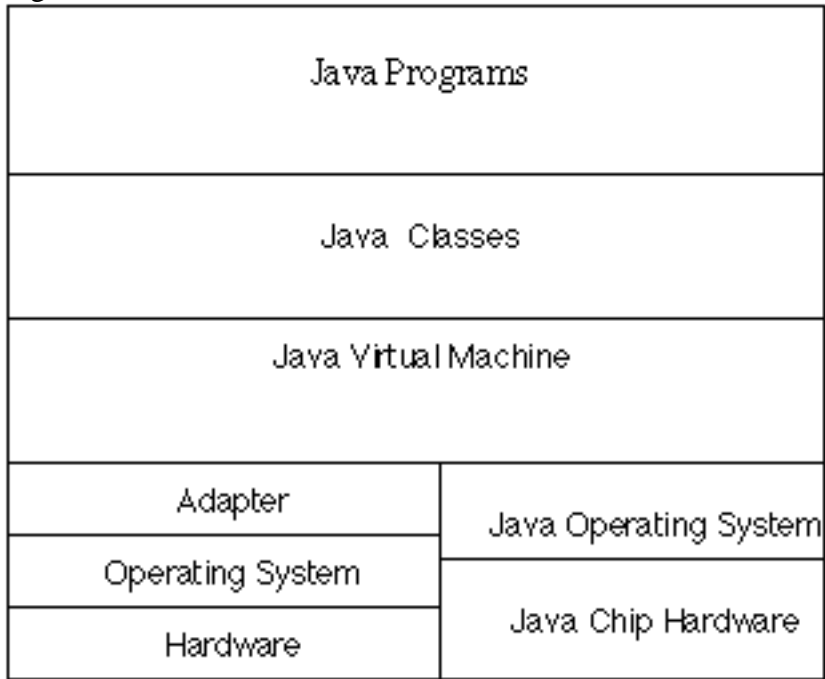


Figure 1.4.

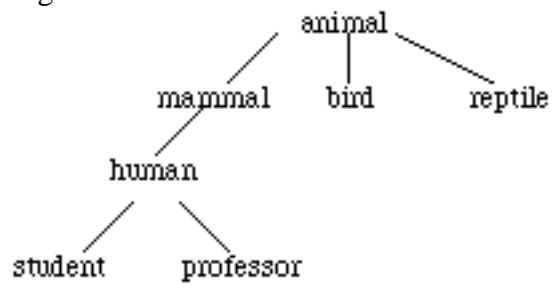


Figure 1.5.

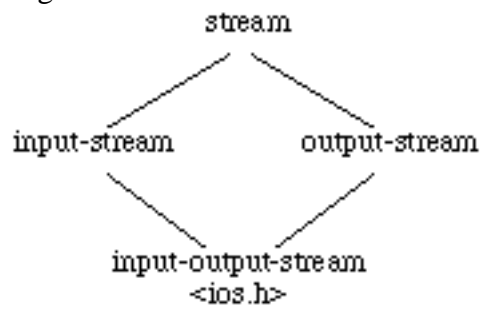


Figure 1.6.












Description	Handled By
power point	 Netscape (internal)
application/x-stuffit	 DropConvert™
image/gif	 Netscape (internal)
image/jpeg	 Netscape (internal)
image/tiff	 JPEGView
image/x-xbitmap	 Netscape (internal)
ULAW Audio	 LiveAudio
audio/aiff	 LiveAudio
WAV Audio	 LiveAudio
Quicktime Video	 QuickTime Plugin
video/mpeg	 Sparkle Fat

Figure 1.7.

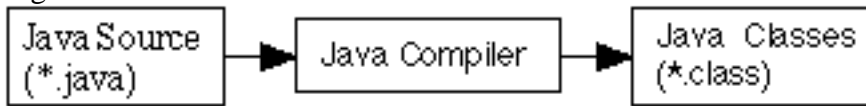


Figure 1.8.

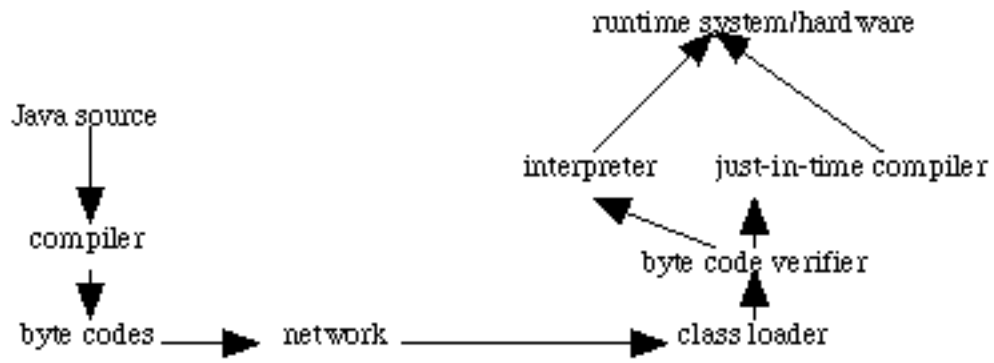


Figure 1.9.



Figure 1.10.



Figure 1.11.

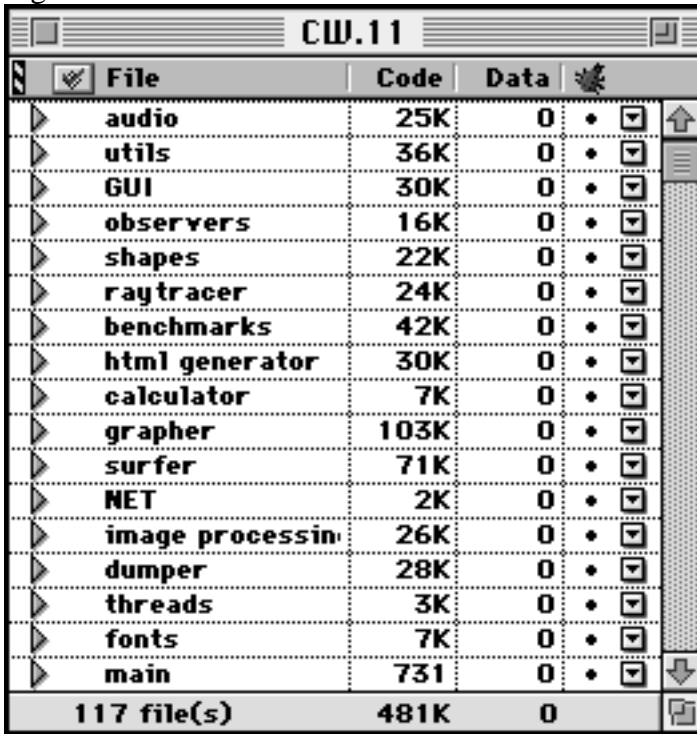


Figure 1.12.



CW.11

Figure 1.13.



File	Code	Data
▶ audio	25K	0
▶ utils	36K	0
▶ GUI	30K	0
▶ observers	16K	0
▶ shapes	22K	0
▶ raytracer	24K	0
▶ benchmarks	42K	0
▶ html generator	30K	0
▶ calculator	7K	0
▶ grapher	103K	0
▶ surfer	71K	0
▶ NET	2K	0
▶ image processin	26K	0
▶ dumper	28K	0
▶ threads	3K	0
▶ fonts	7K	0
▶ main	731	0
117 file(s)	481K	0

Figure 1.14.

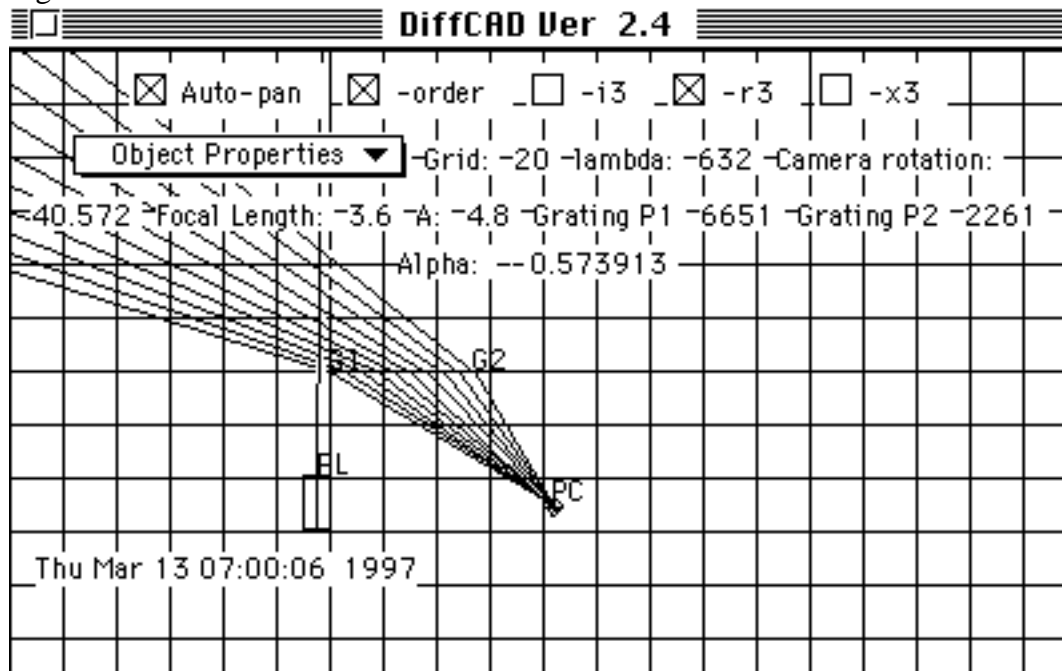


Figure 1.15.

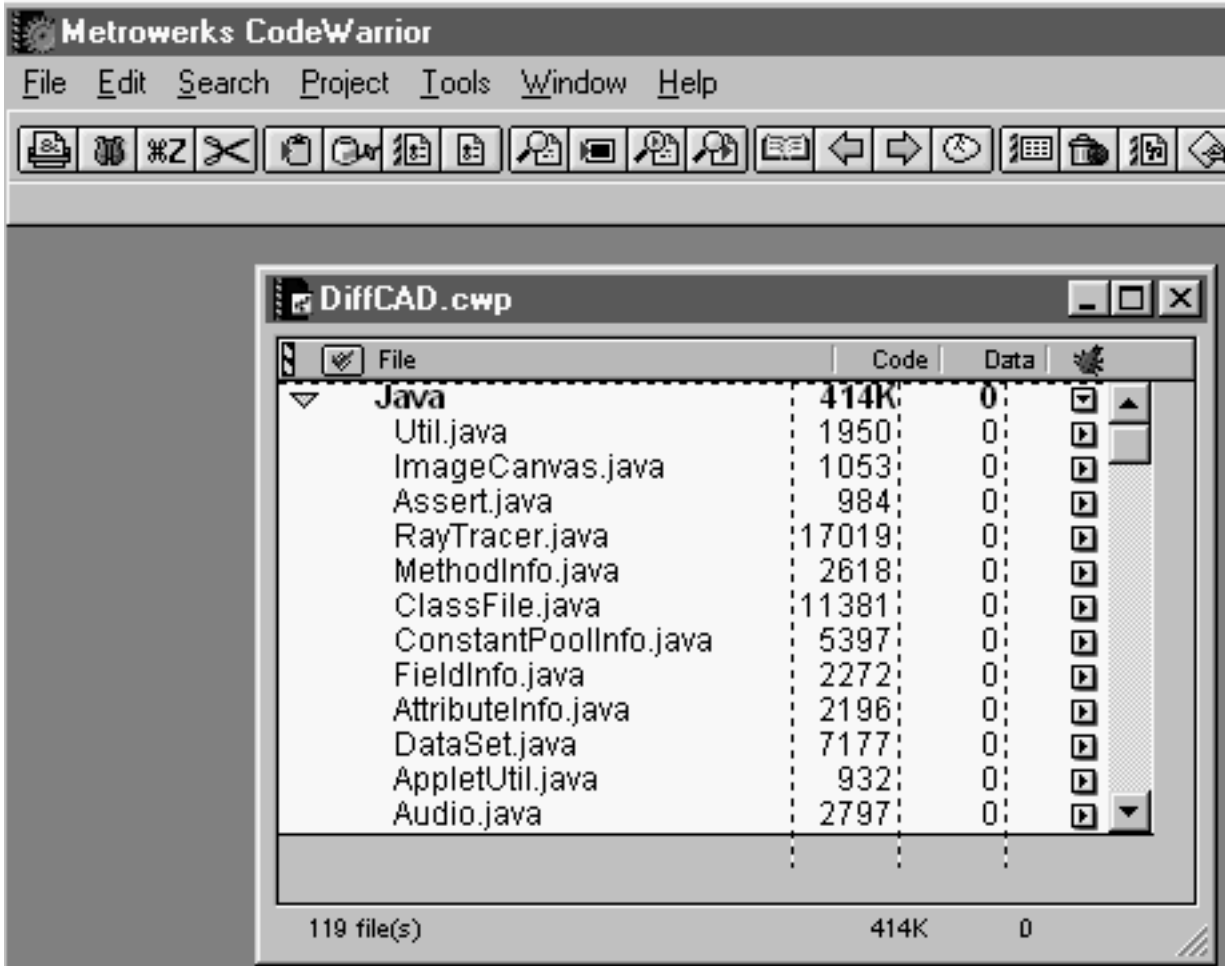


Figure 1.16.

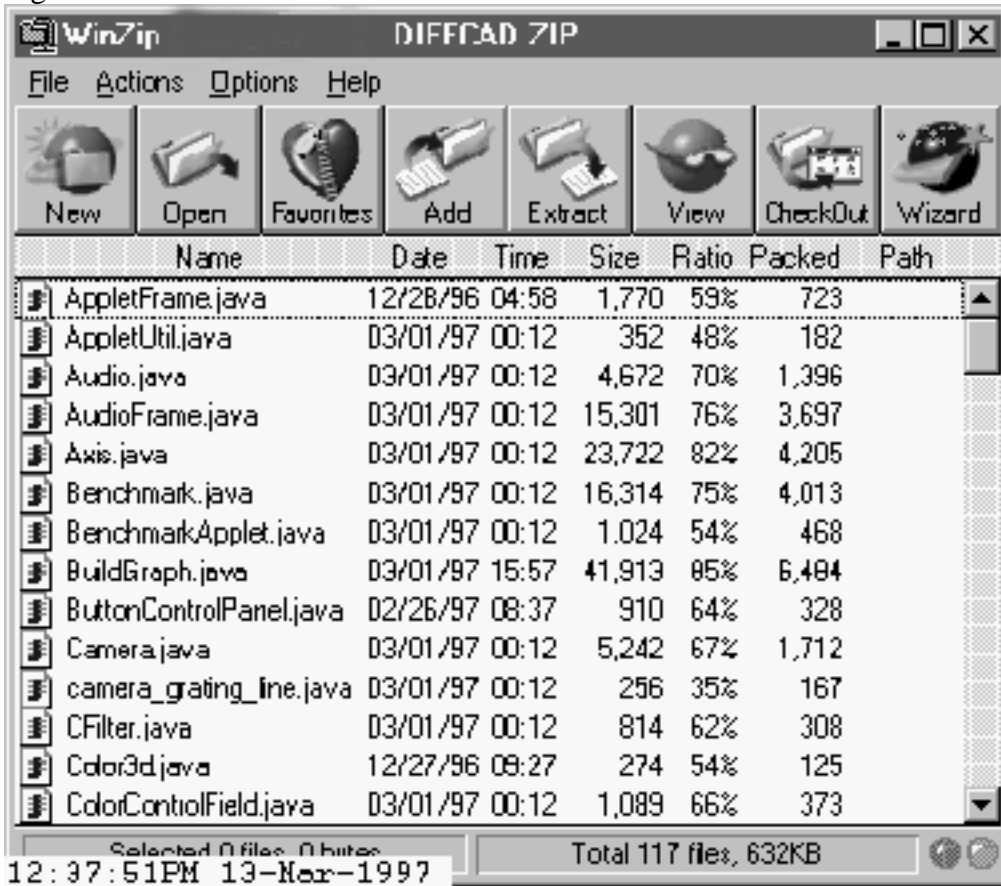


Figure 1.17.

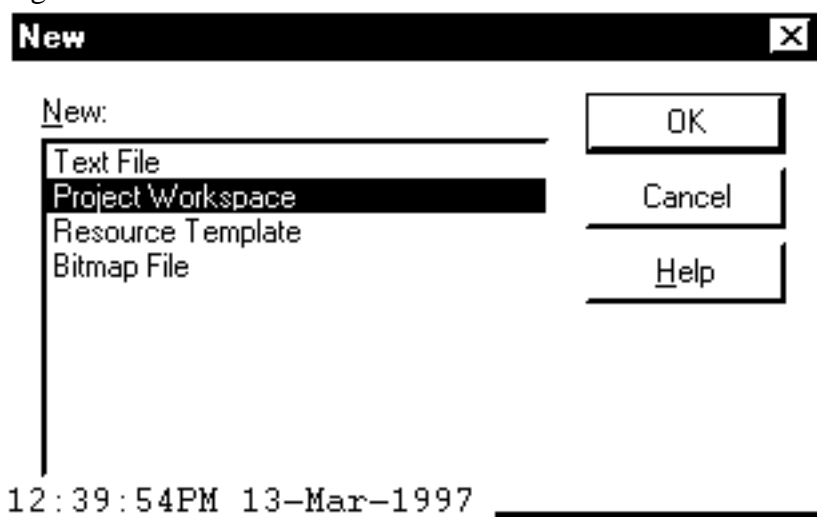


Figure 1.18.

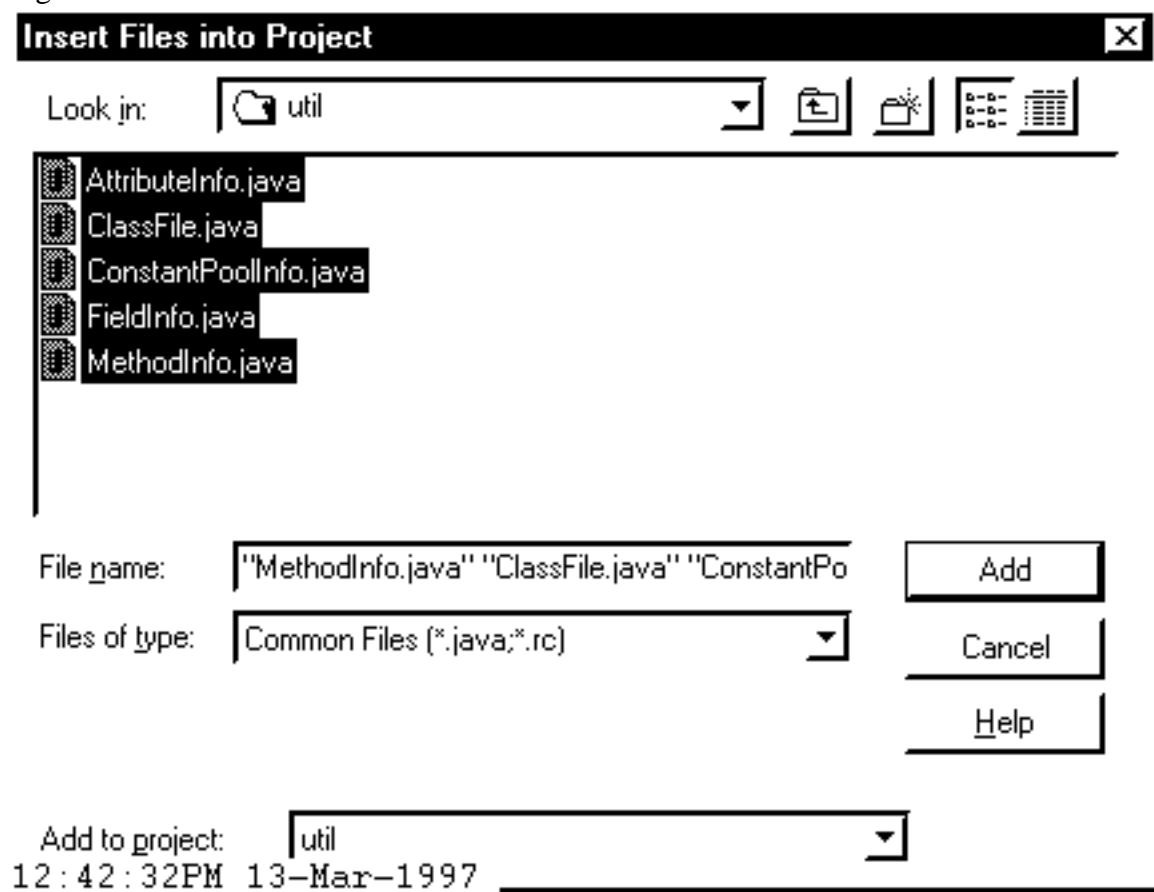
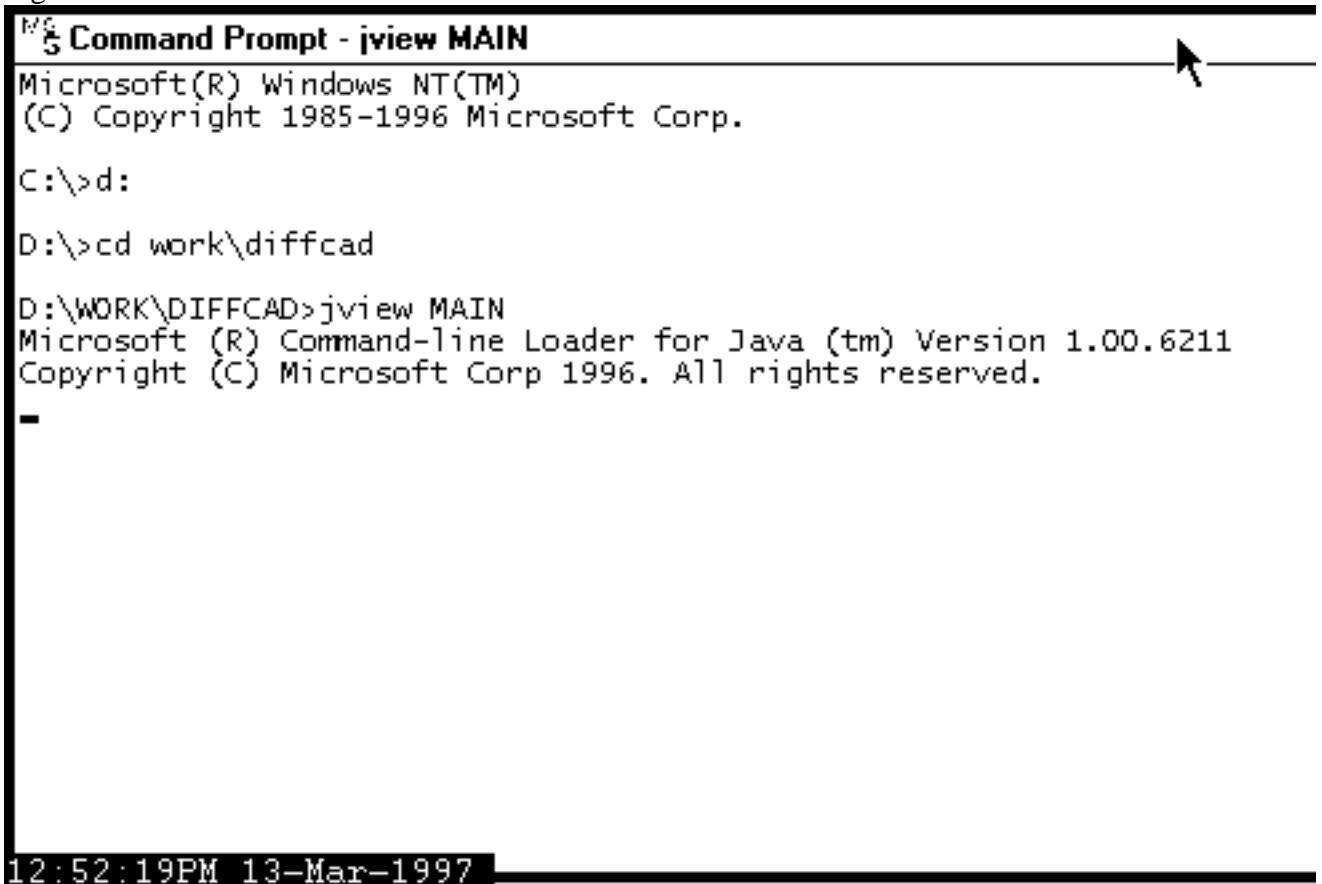


Figure 1.19.



```
MS-DOS Command Prompt - jview MAIN
Microsoft(R) Windows NT(TM)
(C) Copyright 1985-1996 Microsoft Corp.

C:\>d:

D:\>cd work\diffcad

D:\WORK\DIFFCAD>jview MAIN
Microsoft (R) Command-line Loader for Java (tm) Version 1.00.6211
Copyright (C) Microsoft Corp 1996. All rights reserved.

-

12:52:19PM 13-Mar-1997
```

Figure 1.20.



Figure 1.21.

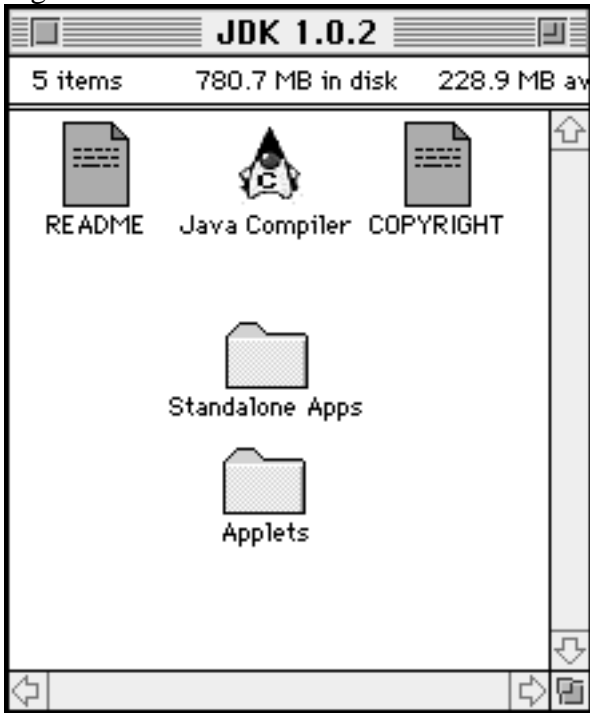


Figure 1.22.

File	Edit	View	La
New Folder			⌘N
Open			⌘O
Print			⌘P
Close Window			⌘W
Get Info			⌘I
Sharing...			
Duplicate			⌘D
Make Alias			⌘M
Put Away			⌘Y
Find...			⌘F
Find Again			⌘G
Page Setup...			
Print Window...			

Figure 1.23.



Figure 1.24.

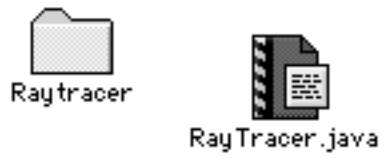


Figure 1.25.



Figure 1.26.

